



RULABELLE

---

---









RULABELLE IS A MULTI-WEAR DRESS DESIGNED TO EXPRESS THE  
UNIQUE INDIVIDUALITY, STYLE AND STRENGTH OF WOMEN.  
ENDLESS OPTIONS, FIGURE FLATTERING CUTS, A WIDE ARRAY  
OF COLOURS, THESE STYLES ARE PERFECT FOR BRIDESMIADS,  
PROM, WEDDING GUESTS AND PARTIES. WITH THE VERSATILITY  
OF BEING RE-WORN FOR A DIFFERENT LOOK EACH TIME!

# RULABELLE

---

ONE DRESS - ENDLESS STYLES





COLOUR: EMERALD

RULABELLE

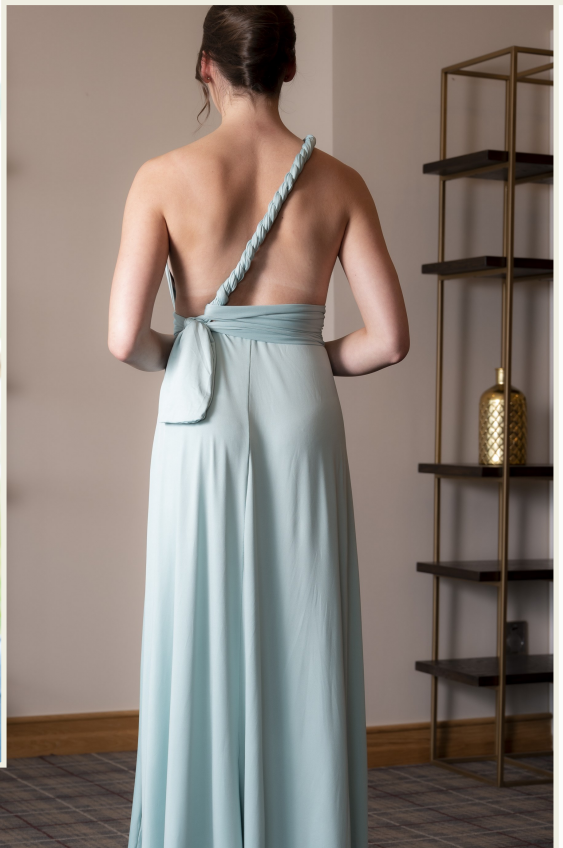




COLOUR: DUSKY CREAM

RULABELLE





COLOUR: DUCK EGG

RULABELLE





COLOUR: MIDNIGHT BLUE

RULABELLE









COLOUR: RUBY RED

RULABELLE





COLOUR: SUNSET ORANGE

RULABELLE





COLOUR: SUNSHINE YELLOW

RULABELLE









COLOUR: DUSKY PURPLE

RULABELLE





COLOUR: MORNING SUNRISE

RULABELLE





COLOUR: PLUM

RULABELLE





COLOUR: RASBERRY PINK

RULABELLE





COLOUR: BLACK

RULABELLE





COLOUR: GRECIAN WHITE



RULABELLE





RULABELLE





RULABELLE







